

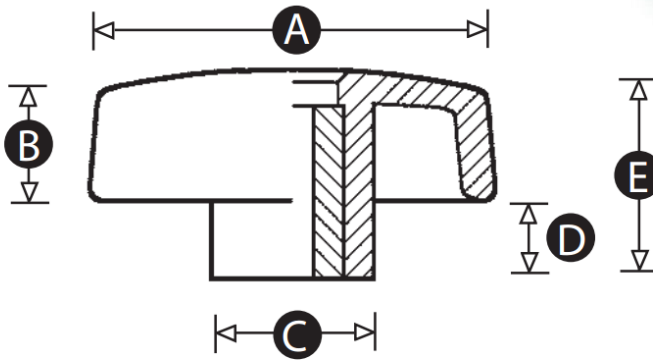
## G15TPK Through Thread Wing Knob

### Features

- Superstrong yet lightweight, can withstand arduous industrial use

### Material

- Body: High impact resistant thermoplastic, matt black finish
- Insert: Brass or aluminium



Part No.	A	B	C	D	E	Insert	Thread Size
G15TPK-8989S	28	10	11	3	13	Brass	M5
G15TPK-7664Q							M6
G15TPK-8987P	40	12	15	8	20	Brass	M6
G15TPK-8987P-AL						Aluminium	
G15TPK-4853Q						Brass	M8
G15TPK-11604T	50	15	15	9	24	Brass	M6
G15TPK-8984Q						Aluminium	M8
G15TPK-8984Q-AL							
G15TPK-11605P	60	18	19	12	30	Brass	M8
G15TPK-5193Q						Aluminium	M10
G15TPK-5193Q-AL							